

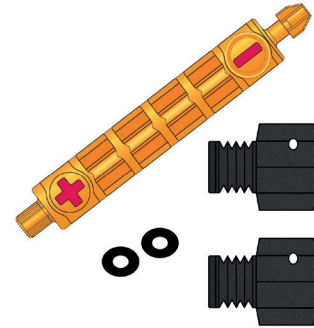
Set M10 probe fitting connection heat meter

For direct installation e.g. in ball valves


Article number: 8212 0001

Our specially developed installation set for mounting temperature sensors in direct installation in accordance with DIN EN 1434 offers you the perfect solution for professional direct immersion installation, e.g. in a ball valve in energy meter systems, such as heat meters and cooling meters.

The set includes two M10x1 Probe fittings suitable for 5.0 and 5.2 mm probes, two O-rings and an Mounting-Tool for removing the used O-rings and easily installing the new O-rings.

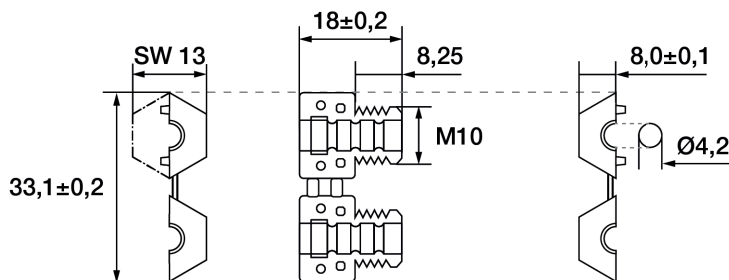


Included in set:


Probe fitting (2x)		
	Material	PEI
	Color	Black
	Dimensions (L/W/H) (mm)	14,5 x 16 x 18
	Process connection	M10x1
	Wrench size	13
	for Ø sensor sleeve (mm)	5,0 and 5,2
	Installation	for direct immersion installation e.g. in a ball valve
	Maximum temperature (°C)	≤ 150

Note: The probe fitting has a sealing eyelet for attaching the measuring point seal.

Technical drawing



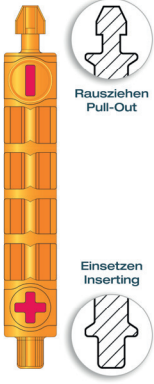
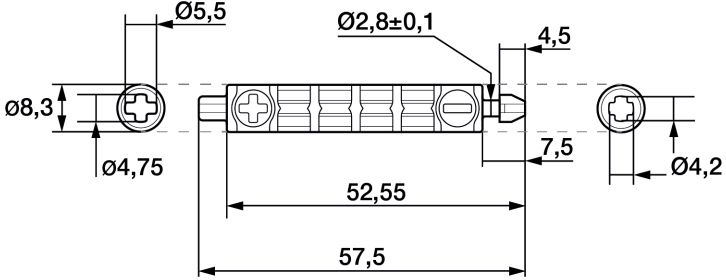
All dimensions in mm

O-ring (2x)		
	Material	EPDM
	Color	Black
	Dimensions (L/W/H) (mm)	9,1 x 9,1 x 2,4
	Maximum temperature (°C)	≤ 150
	Shore hardness	70 A

Technical drawing



All dimensions in mm

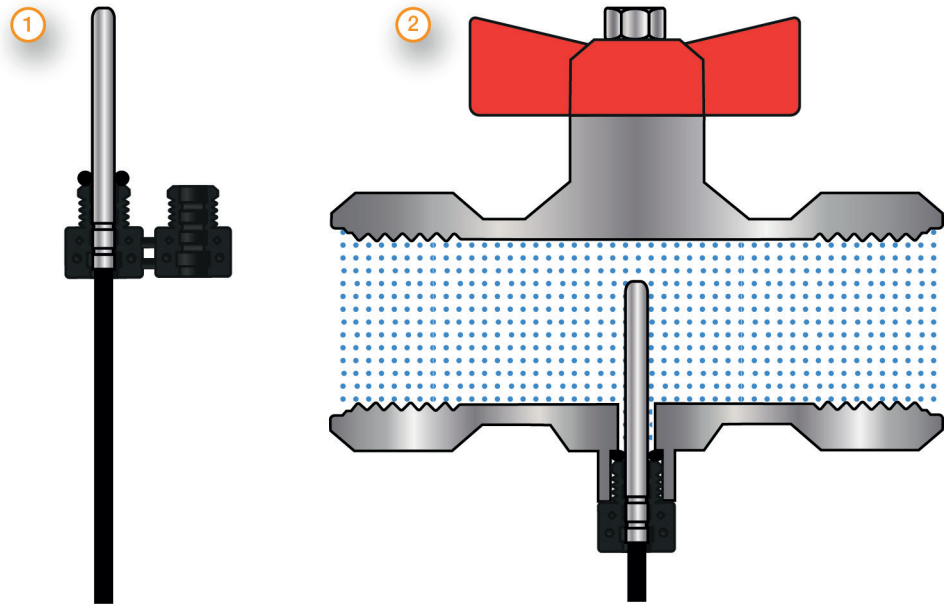
Mounting-Tool (1x)		
	Material	PVC
	Color	Orange
	Dimensions (L/W/H) (mm)	57,5 x 8,3 x 8,3
Technical drawing		
		

All dimensions in mm

Delivery and Assembly	
Assembly instructions	for direct immersion installation in ball valves in accordance with MID
Delivery and Packaging	2x Probe fitting, 1x Mounting-Tool, 2x O-ring packaged in PE bag

Important assembly advices (Probe installation in accordance with DIN EN 1434)

Einbauzustand in Kugelhahn
Installation state in ball valve



Proceed as follows when installing the sensor:

- Use a new O-ring and a new probe fitting for each installation.
- First, the old temperature probe and the old O-ring must be removed from the installation point of the ball valve without leaving any residue.
- Use the Mounting-Tool provided for this purpose.
- The O-ring and the sealing surfaces must be clean and free of damage.
- Insert the new O-ring into the ball valve using the Mounting-Tool.
- Insert the probe into the half-shell of the probe fitting so that the rolling engages in the bars.
- Close the probe fitting around the probe.
- Screw the probe fitting together with the temperature probe hand-tight into the installation point.
- A leak test must be carried out at the end of each installation.
- The probe must be sealed in accordance with DIN EN 1434 using the existing sealing points on the probe fitting.

In Germany, temperature probes in pipes (qp ≤ 6) must be installed directly in new systems in accordance with DIN EN 1434-2 and Technical Guideline TR-K8.

HP / KC / 09.12.2024

Testo Sensor GmbH

+49 7653 96597-71

Managing Director: Prof. Burkart Knospe, Martin Arndt, Timo Löffler

Testo-Straße 1

webshop@testo-sensor.de

Amtsgericht Freiburg HRB 706025 | Umsatzsteuer-ID.: DE274417683

D-79853 Lenzkirch

Please find our whole temperature probe and transmitter portfolio in our webshop at: www.testo-sensor.shop

Set G¹/₄ probe fitting heat meter

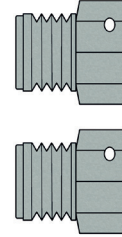
For installation in immersion sleeves

Article number: 8212 0002

Our specially developed installation set for the secure installation of temperature sensors in indirect installation offers you the perfect solution for professional installation in MID or existing immersion sleeves in energy meter systems, such as heat meters and cooling meters.

The set includes two G¹/₄ sensor screw connections suitable for 6.0 mm probes.

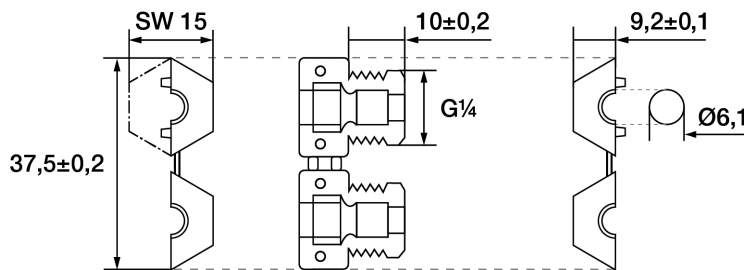
Included in set:



Probe fitting (2x)		
	Material	PEI
	Color	Lightgrey
	Dimensions (L/W/H) (mm)	16,5 x 16 x 18
	Process connection	G ¹ / ₄
	Wrench size	15
	for Ø sensor sleeve (mm)	6,0
	Installation	for installation in MID or existing immersion sleeves
	Maximum temperature (°C)	≤ 150

Note: The probe fitting has a sealing eyelet for attaching the measuring point seal.

Technical drawing



All dimensions in mm

HP / KC / 09.12.2024

Testo Sensor GmbH

+49 7653 96597-71

Testo-Straße 1
D-79853 Lenzkirch

webshop@testo-sensor.de

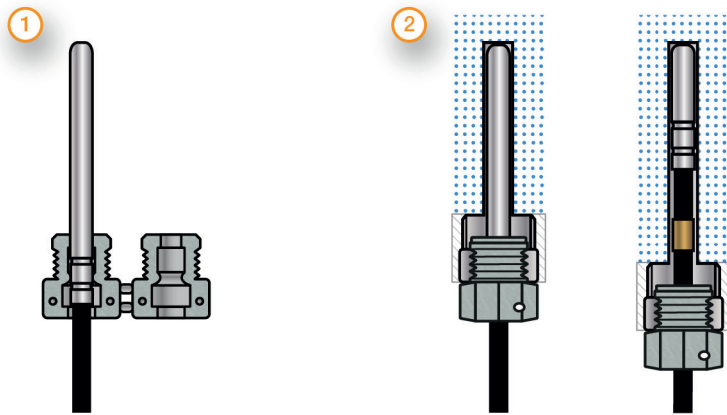
Please find our whole temperature probe and transmitter portfolio in our webshop at: www.testo-sensor.shop

Managing Director: Prof. Burkart Knospe, Martin Arndt, Timo Löffler

Amtsgericht Freiburg HRB 706025 | Umsatzsteuer-ID.: DE274417683

Delivery and Assembly

Assembly instructions	for installation in existing immersion sleeves in accordance with MID
Delivery and Packaging	2x Probe fitting packaged in PE bag

Important assembly advices
Einbauzustand in eine Tauchhülse
Installation state in an immersion sleeve


Proceed as follows when installing the sensor:

- Use a new probe fitting for each installation.
- When installing immersion sleeves, identical immersion sleeves must be used for each probe in a pair in terms of type, installation length and internal diameter.
- The use of heat-conducting paste is not permitted.
- The probes must be installed up to the bottom of the immersion sleeve.
- The probes can also be designed for installation in long immersion sleeves. In this version, the clamping sleeve to be used may be located on the probe cable. Before installation, check that the correct cable clamping sleeve is used by measuring the immersion sleeve length.
- Insert the probe into the half-shell of the probe fitting so that the rolling or press-on sleeve engages in the bars.
- Close the probe fitting around the probe.
- Screw the probe fitting together with the temperature probe hand-tight into the immersion sleeve.
- A function test must be carried out at the end of each installation.
- The probe must be sealed using the existing sealing points on the probe fitting.

When installing temperature sensors in immersion sleeves in Germany, the list of tolerances issued by the PTB (Physikalisch-Technische Bundesanstalt) must be observed, and the immersion sleeves must be marked accordingly with their tolerance number.

Testo Sensor GmbH

+49 7653 96597-71

Testo-Straße 1
D-79853 Lenzkirch

webshop@testo-sensor.de

Please find our whole temperature probe and transmitter portfolio in our webshop at: www.testo-sensor.shop

Managing Director: Prof. Burkart Knospe, Martin Arndt, Timo Löffler

Amtsgericht Freiburg HRB 706025 | Umsatzsteuer-ID.: DE274417683