

# Duct thermocouple Type K with glass fibre cable

**Article no.: 803783 1211**

Our Type K duct thermocouple with glass fibre cable is an air thermocouple for air ducts and is suitable for temperature measurement in gaseous media, especially in air ducts. The exposed measuring element is housed in a perforated stainless steel sleeve, providing mechanical protection while the perforation allows for a fast response time. The glass fibre cable is designed for operating temperatures up to +400 °C.



General Information	
Measuring range	-50 °C to +400 °C depending on chosen connection cable
Perm. °C range cable	-50 °C to +400 °C
Accuracy	-40 °C to +375 °C: ±1,5 °C   375 °C to 1.000 °C: ±0,004  t  according to DIN IEC 60584 Class 1
Pull-out force	≥ 30 N

Supply and output	
Measuring element	Thermocouple Type K
Measuring point	Measuring point isolated
Measurement signal	Thermovoltage

Ambient conditions	
Protection class	none (measuring element is exposed)
Humidity and moisture condensation resistance	according to application-specific qualification

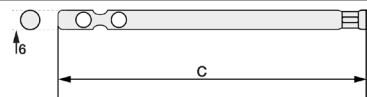
Certificates and Standards	
Standards	DIN EN 61326-1:2013   DIN EN IEC 63000:2019-05
Directive	RoHS 2011/65/EU   2014/30/EU



**Customizable options**

- C - Length protection sleeve
- E - Material connection cable
- F - Length connection cable
- G - Connector
- H - Bend protection

Protection sleeve		C - Length prot. sleeve	
Material	Stainless steel 1.4571   316TI	Code	Length (mm)
Length (mm)	please choose	C0100	100 <sup>1)</sup>
Ø (mm)	6 <sup>1)</sup>	C0200	200 <sup>1)</sup>



other protective sleeve lengths and Ø available on request | <sup>1)</sup> Tolerance ± 0,1 mm

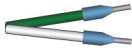
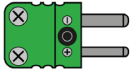
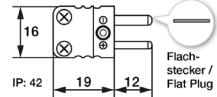
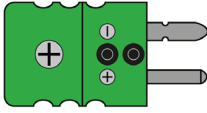
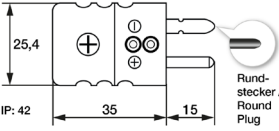
E - Cable material and configuration connection cable											
Picture	Code	Type	Color	IP	From (°C) <sup>1)</sup>	To (°C) <sup>1)</sup>	Outside material	Material strand	Ø (mm) <sup>2)</sup>	Q (mm <sup>2</sup> )	Color strand
	E8322	Thermocouple cable	Type K <sup>3)</sup>	IP20	-50	+350	Varnish	Glass fibre	3,5	0,22	gn, wt
Insulation resistance: ≥ 100 MOhm at min. 100 VDC   <sup>1)</sup> Perm. range °C   <sup>2)</sup> Tolerance ± 0,2 mm   <sup>3)</sup> Color according to IEC 584   <sup>4)</sup> per thermocouple											


MW / KC / 05.09.2025

**Testo Sensor GmbH**

F - Length								
Code	F010	F020	F030	F040	F050	F100	F150	F200
m	1	2	3	4	5	10	15	20

Other lengths on request

G - Connector			
Picture	Code	Feature	Technical drawing - connector
	G01	Insulated end ferrules (50 mm)	
	G12	Mini-TC connector Type K gn	
	G32	TC connector Type K gn	

H - Bend protection					
Picture	Length (mm)	Material	Code	Feature	
	50	Stainless steel spring 1.4310   SUS 302	H0	Without (Standard)	
			H1	Metal bend protection	

Your order code					
Article no.	Length protection sleeve	Material connection cable	Length connection cable	Connector	Bend protection
803783 1211	C_____	E_____	F_____	G_____	H_____

Delivery and Assembly	
Assembly instructions	by using a clamp connection or immersion sleeve   The exposed measuring element is sensitive to mechanical damage. Therefore, do not press the tip of the sleeve with your fingers or a pointed object.
Delivery and Packaging	Probe, Instruction manual, seperatly packaged in PE bag

MW / KC / 05.09.2025

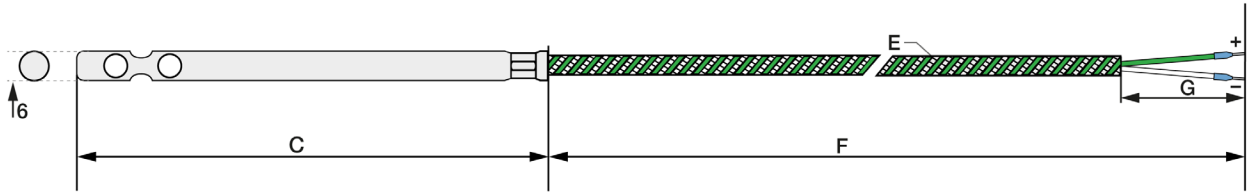
**Testo Sensor GmbH**

+49 7653 96597-71 Managing Directors: Timo Löffler, Peter Kräuter  
 Testo-Straße 1 webshop@testo-sensor.de Amtsgericht Freiburg HRB 706025 | VAT-ID: DE274417683 | Business-ID: DE274417683-00001  
 D-79853 Lenzkirch Please find our whole temperature probe and transmitter portfolio in our webshop at: [www.testo-sensor.shop](http://www.testo-sensor.shop)

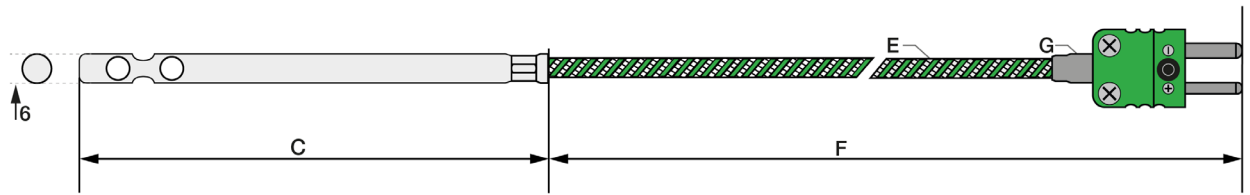
**Technical drawing**

<b>Customizable options</b>	E - Material connection cable	G - Connector	All dimensions in mm
C - Length protection sleeve	F - Length connection cable	H - Bend protection	

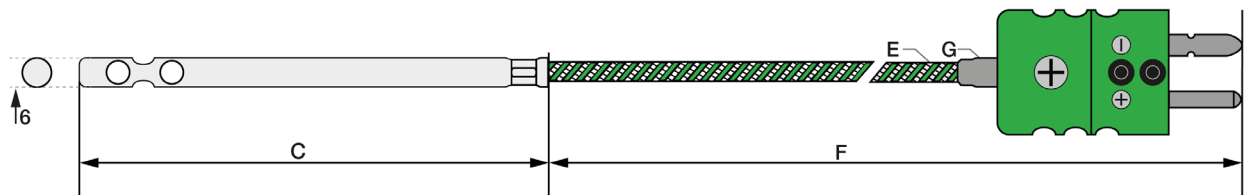
**Version with insulated end ferrules**



**Version with Mini TE connector**



**Version with TE connector**



MW / KC / 05.09.2025

**Testo Sensor GmbH**

# Matching accessories: Connector

G - Connector					
Picture	Code	Feature	Picture	Code	Feature
	809140 2000	Mini-TC connector Type K gn		809100 2000	Mini-TC coupling Type K gn
	809150 2000	TC connector Type K gn		809110 2000	TC coupling Type K gn

Technical drawing - connector					
		Mini-TC connector			Mini-TC coupling
		TC connector			TC coupling

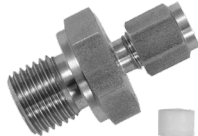
MW / KC / 05.09.2025

**Testo Sensor GmbH**

# Matching accessories: Compression fittings

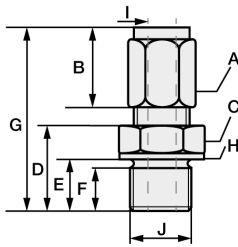
## Compression fitting with PTFE clamping ring

Compression fittings with PTFE clamping ring can be used several times. They are only pressure-tight up to 10 bar. For assembly, please tighten the connecting nut of the compression fitting by hand as far as it will go (clearly noticeable) by hand. With a wrench suitable for the width across flats, please make a 1/4 turn for compression fittings with PTFE pressure ring.

	<b>Article no.</b>	<b>809610 2XXX</b>	<b>Code</b>	<b>I - Ø Inside (mm)</b>	<b>Code</b>	<b>J - Process connection</b>
	Temp. max	+260 °C	0	1	27	M6x1 <sup>1)</sup>
	Pressure proof up to	10 bar	1	1,5	28	M8x1 <sup>1)</sup>
	Material	Stainless steel 1.4571   316TI	3	3	22	M10x1
	Material clamping ring	PTFE	6	6	14	G1/8 "
	Scope of delivery	Compression fitting, packed in PE bag			12	G1/4 "
					11	G1/2 "
Your order code	809610 2	-			--	

Append the code for Ø Inside & process connection to the article no. | <sup>1)</sup> not available for Ø Inside (I) 6 mm

## Dimensions for technical drawing

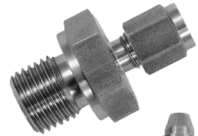


I	J	A	B	C	D	E	F	G	H
1	M6x1 <sup>1)</sup>	SW10	13	SW12	13	9	8	31	Ø10
1,5	M8x1 <sup>1)</sup>	SW10	13	SW12	13,5	9,5	8	31	Ø11,8
3	M10x1	Ø 1,5 & 3: SW10   Ø 6: SW12	13	SW14	13,5	9,5	8	32	Ø13,8
6	G1/8 "	Ø 1,5 & 3: SW10   Ø 6: SW12	13	SW14	13,5	9,5	8	32	Ø13,8
	G1/4 "	Ø 1,5 & 3: SW10   Ø 6: SW12	13	SW19	20	14	12	38,5	Ø18
	G1/2 "	Ø 1,5 & 3: SW10   Ø 6: SW12	13	SW27	23	17	14	38,5	Ø26

All dimensions in mm | <sup>1)</sup> not available for Ø Inner (I) 6 mm

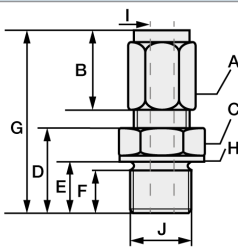
## Compression fitting with stainless steel cutting ring

In compression fittings with stainless steel cutting ring, the compression fitting connects with the protective sleeve. This connection is pressure-resistant up to 40 bar. Therefore, these compression fittings can also only be used once and must be tightened more firmly. For assembly, please tighten the union nut of the compression fitting by hand as far as it will go (clearly noticeable). With a wrench suitable for the wrench size, please make 1 3/4 turns for compression fittings with stainless steel cutting ring.

	<b>Article no.</b>	<b>809610 1XXX</b>	<b>Code</b>	<b>I - Ø Inside (mm)</b>	<b>Code</b>	<b>J - Process connection</b>
	Temp. max	+800 °C	1	1,5	27	M6x1 <sup>1)</sup>
	Pressure proof up to	40 bar	3	3	28	M8x1 <sup>1)</sup>
	Material	Stainless steel 1.4571   316TI	6	6	22	M10x1
	Material clamping ring	Stainless steel 1.4571   316TI			14	G1/8 "
	Scope of delivery	Cutting ring screw fitting, packed in PE bag			12	G1/4 "
					11	G1/2 "
Your order code	809610 1	-			--	

Append the code for Ø Inside & process connection to the article no. | <sup>1)</sup> not available for Ø Inside (I) 6 mm

## Dimensions for technical drawing



I	J	A	B	C	D	E	F	G	H
1	M6x1 <sup>1)</sup>	SW10	13	SW12	13	9	8	31	Ø10
3	M8x1 <sup>1)</sup>	SW10	13	SW12	13,5	9,5	8	31	Ø11,8
6	M10x1	Ø 1,5 & 3: SW10   Ø 6: SW12	13	SW14	13,5	9,5	8	32	Ø13,8
	G1/8 "	Ø 1,5 & 3: SW10   Ø 6: SW12	13	SW14	14	9,5	8	32	Ø13,8
	G1/8 "	Ø 1,5 & 3: SW10   Ø 6: SW12	13	SW19	20	14	12	38,5	Ø18
	G1/4 "	Ø 1,5 & 3: SW10   Ø 6: SW12	13	SW27	23	17	14	38,5	Ø26

All dimensions in mm | <sup>1)</sup> not available for Ø Inner (I) 6 mm

MW / KC / 05.09.2025

## Testo Sensor GmbH

# Matching accessories: Mounting flange

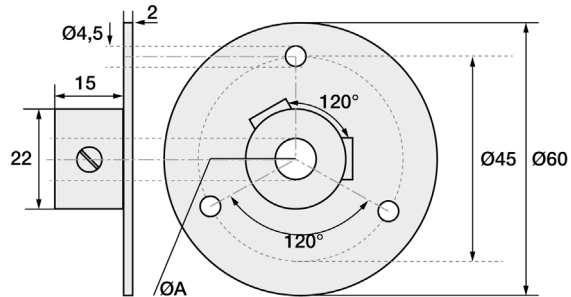
## Steel flange

Article no.	809500 1XXX
Material	Stainless Steel
Fixing	3 x Ø 4,5 mm drill holes

Now please select the size of the hole and append the last digits to your order number.

A - Hole (mm)	Code
6	060
9	090
10	100
15	150

Your order code 809500 1\_ \_ \_



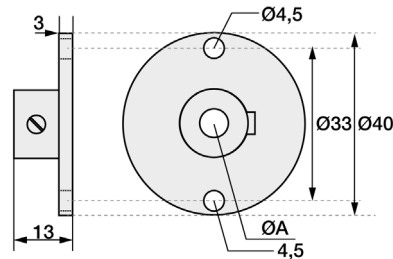
## Aluminium flange

Article no.	809500 2XXX
Material	Aluminium
Fixing	2 x Ø 4,5 mm drill holes

Now please select the size of the hole and append the last digits to your order number.

A - Hole (mm)	Code
6	060
11	110

Your order code 809500 2\_ \_ \_



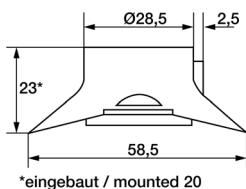
## Plastic flange

Article no.	809500 4XXX
Material	Plastic
Fixing	2 x Ø 4,5 mm drill holes

Now please select the size of the hole and append the last digits to your order number.

A - Hole (mm)	Code
6	060
12	120

Your order code 809500 4\_ \_ \_



\*eingebaut / mounted 20

