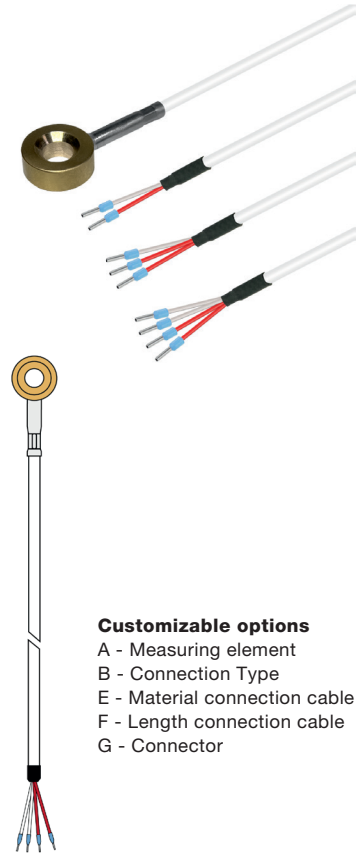


Contact probe with ring and PFA cable

Article no.: 802072 1011

Our contact probe with ring and PFA cable is used for temperature measurements on smooth surfaces in machine and apparatus construction. It is attached via a screw connection and can be mounted directly onto the surface with the ring. PFA is highly resistant to chemicals, flexible and can withstand high temperatures up to +260 °C. Simply select the required configuration features and send us the order code.



Customizable options

- A - Measuring element
- B - Connection Type
- E - Material connection cable
- F - Length connection cable
- G - Connector

| General Information | |
|---|---|
| Measuring range | -50 °C to +260 °C depending on sensor Type and connection cable |
| Perm. °C range cable | -50 °C to +260 °C |
| Accuracy | depending on sensor Type |
| Supply and output | |
| Max. meas. current | max. 1 mA |
| Supply voltage | approx. 5 V depending on measurement current |
| Measurement signal | passive (resistance value) |
| Ambient conditions | |
| Protection class | IP54 according DIN 60529 (depending on cable) |
| Humidity and moisture condensation resistance | according to application-specific qualification |
| Certificates and Standards | |
| Standards | DIN EN 61326-1:2013 DIN EN IEC 63000:2019-05 |
| Directive | RoHS 2011/65/EU 2014/30/EU |

| A - Measuring element | | | | |
|-----------------------|--------|--|-------------------------|-----------------------|
| Code | Sensor | Accuracy / Tolerance resistance | From (°C) ¹⁾ | To (°C) ¹⁾ |
| A012 | Pt100 | Cl. B dT = ±(0,30 °C + 0,005 t) ¹⁾ | -50 °C | +400 °C |
| A011 | Pt100 | Cl. A dT = ±(0,15 °C + 0,002 t) ¹⁾ | -50 °C | +300 °C |
| A022 | Pt500 | Cl. B dT = ±(0,30 °C + 0,005 t) ¹⁾ | -70 °C | +500 °C |
| A032 | Pt1000 | Cl. B dT = ±(0,30 °C + 0,005 t) ¹⁾ | -50 °C | +400 °C |
| A031 | Pt1000 | Cl. A dT = ±(0,15 °C + 0,002 t) ¹⁾ | -50 °C | +300 °C |

¹⁾according to IEC 751 / EN 60751 | ²⁾ Perm. range °C | Please note that the measuring range depends on the measuring element and the connecting cable. | Detailed information and the characteristics can be found in our download area.

| B - Connection Type | |
|---------------------|-------------|
| Code | Conn. Type |
| B2 | 2-Wire (2W) |
| B3 | 3-Wire (3W) |
| B4 | 4-Wire (4W) |

| Possible connections | | | |
|----------------------|----|----|----|
| Sensor | 2W | 3W | 4W |
| Pt | ✓ | ✓ | ✓ |

KC / MWA / 14.03.2024

Testo Sensor GmbH

| Contact body | | | | | |
|--------------|---|-------|-------------------|----|---------|
| Picture | Contact body | | Dimensioning | | Drawing |
| | Contact geometry | Ring | Total length (mm) | 36 | |
| | Material | Brass | Height (mm) | 6 | |
| | Mounting hole (mm) | 6,8 | Ø (mm) | 16 | |
| | We offer other contact bodies on request. | | | | |

E - Cable material and configuration connection cable

| Picture | Code | Connection Type | Color | IP | From (°C) ¹⁾ | To (°C) ¹⁾ | Outside material | Material strand | Color strand | Ø (mm) ²⁾ | Q (mm ²) ³⁾ | Ω / m ⁴⁾ |
|---------|-------|-----------------|-------|------|-------------------------|-----------------------|------------------|-----------------|----------------|----------------------|------------------------------------|---------------------|
| | E5500 | 2-Wire | white | IP67 | -50 | +260 | PFA | PFA | rd, wt | 2,4 | 0,22 | 0,09 |
| | E5501 | 3-Wire | white | IP67 | -50 | +260 | PFA | PFA | rd, wt, rd | 2,4 | 0,22 | 0,09 |
| | E5503 | 4-Wire | white | IP67 | -50 | +260 | PFA | PFA | rd, wt, rd, wt | 2,7 | 0,22 | 0,09 |

Insulation resistance: ≥ 100 MOhm a min. 100 VDC | ¹⁾Perm. range °C | ²⁾Tolerance ± 0,2 mm | ³⁾ Tolerance ± 0,03 mm² | ⁴⁾ per single strand

| F - Length | | | | | | | | | G - Connector | | |
|------------|------|------|------|------|------|------|------|------|---------------|--------------------------------|--|
| Code | F010 | F020 | F030 | F040 | F050 | F100 | F150 | F200 | Code | G01 | |
| m | 1 | 2 | 3 | 4 | 5 | 10 | 15 | 20 | Feature | Insulated end ferrules (50 mm) | |

Other lengths on request

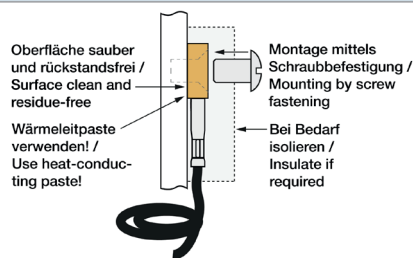
Your order code

| Article no. | Measuring element | Connection Type | Material connection cable | Length connection cable | Connector |
|-------------|-------------------|-----------------|---------------------------|-------------------------|-----------|
| 802072 1011 | A_____ | B_____ | E_____ | F_____ | G_____ |

Delivery and Assembly

| | |
|------------------------|--|
| Assembly instructions | by means of screw fastening |
| Delivery and Packaging | Probe, Heat-conducting paste, seperatly packaged in PE bag |

Important assembly advices



The surface must be polished and free of residue. Please attach the probe firmly. Please ensure good thermal contact and use thermal conduction paste if necessary. Depending on the requirements, it may be advisable to insulate the probe to minimize the influence of the ambient temperature.

KC / MWA / 14.03.2024

Testo Sensor GmbH

+49 7653 96597-71 Geschäftsführer: Prof. Burkart Knospe, Martin Arndt, Timo Löffler
 Testo-Straße 1 webshop@testo-sensor.de Amtsgericht Freiburg HRB 706025 | Umsatzsteuer-ID.: DE274417683
 D-79853 Lenzkirch Unser gesamtes Temperaturfühler- und Transmitter- Portfolio finden Sie in unserem Webshop unter: www.testo-sensor.shop

Technical drawing

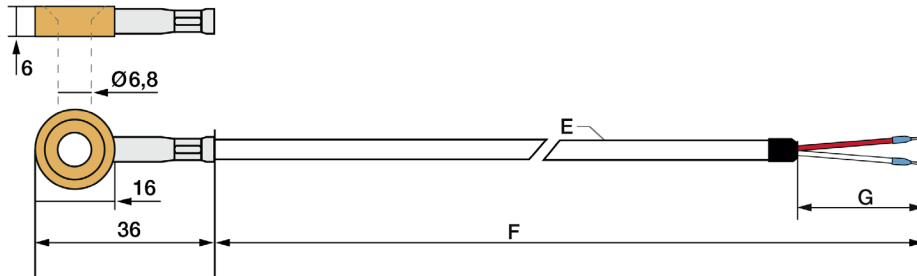
Customizable options

A-Measuring element
 B-Connection Type
 -

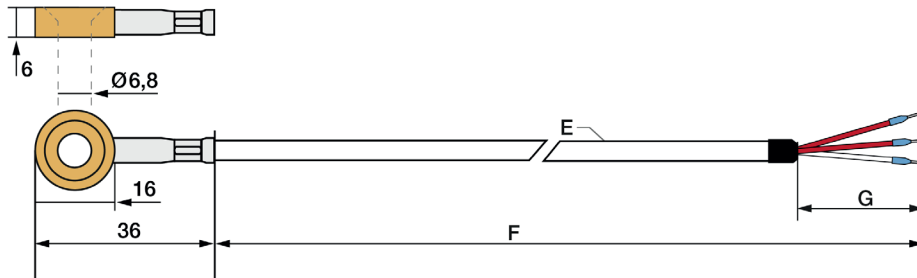
E-Material connection cable
 F-Length connection cable
 G-Connector

All dimensions in mm

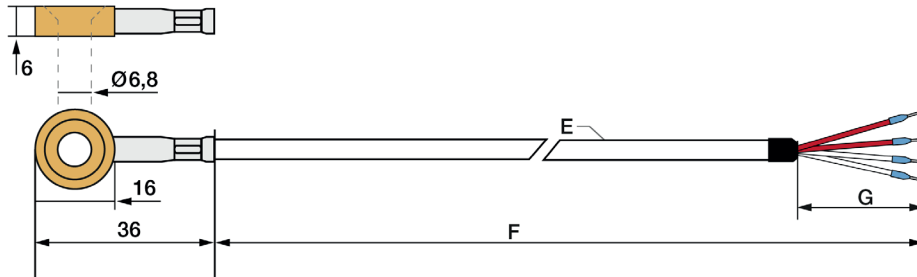
2-Wire version



3-Wire version



4-Wire version



KC / MWA / 14.03.2024


Testo Sensor GmbH

Testo-Straße 1
 D-79853 Lenzkirch

+49 7653 96597-71
 webshop@testo-sensor.de
 Unser gesamtes Temperaturfühler- und Transmitter- Portfolio finden Sie in unserem Webshop unter: www.testo-sensor.shop

Geschäftsführer: Prof. Burkart Knospe, Martin Arndt, Timo Löffler
 Amtsgericht Freiburg HRB 706025 | Umsatzsteuer-ID.: DE274417683

Matching accessories: Heat-conducting paste

| Heat-conducting paste | | |
|---|----------------------|--------------------|
|  | Article no. | 809540 1000 |
| | Content | 10 ml |
| | Thermal conductivity | >2.5 W/mK |
| | Min / Max °C | -30 °C to +280 °C |
| | Thermal resistance | < 0.126 |

KC / MWA / 14.03.2024

Testo Sensor GmbH

+49 7653 96597-71

webshop@testo-sensor.de

Testo-Straße 1
D-79853 Lenzkirch

Geschäftsführer: Prof. Burkart Knospe, Martin Arndt, Timo Löffler

Amtsgericht Freiburg HRB 706025 | Umsatzsteuer-ID.: DE274417683

Unser gesamtes Temperaturfühler- und Transmitter- Portfolio finden Sie in unserem Webshop unter: www.testo-sensor.shop